

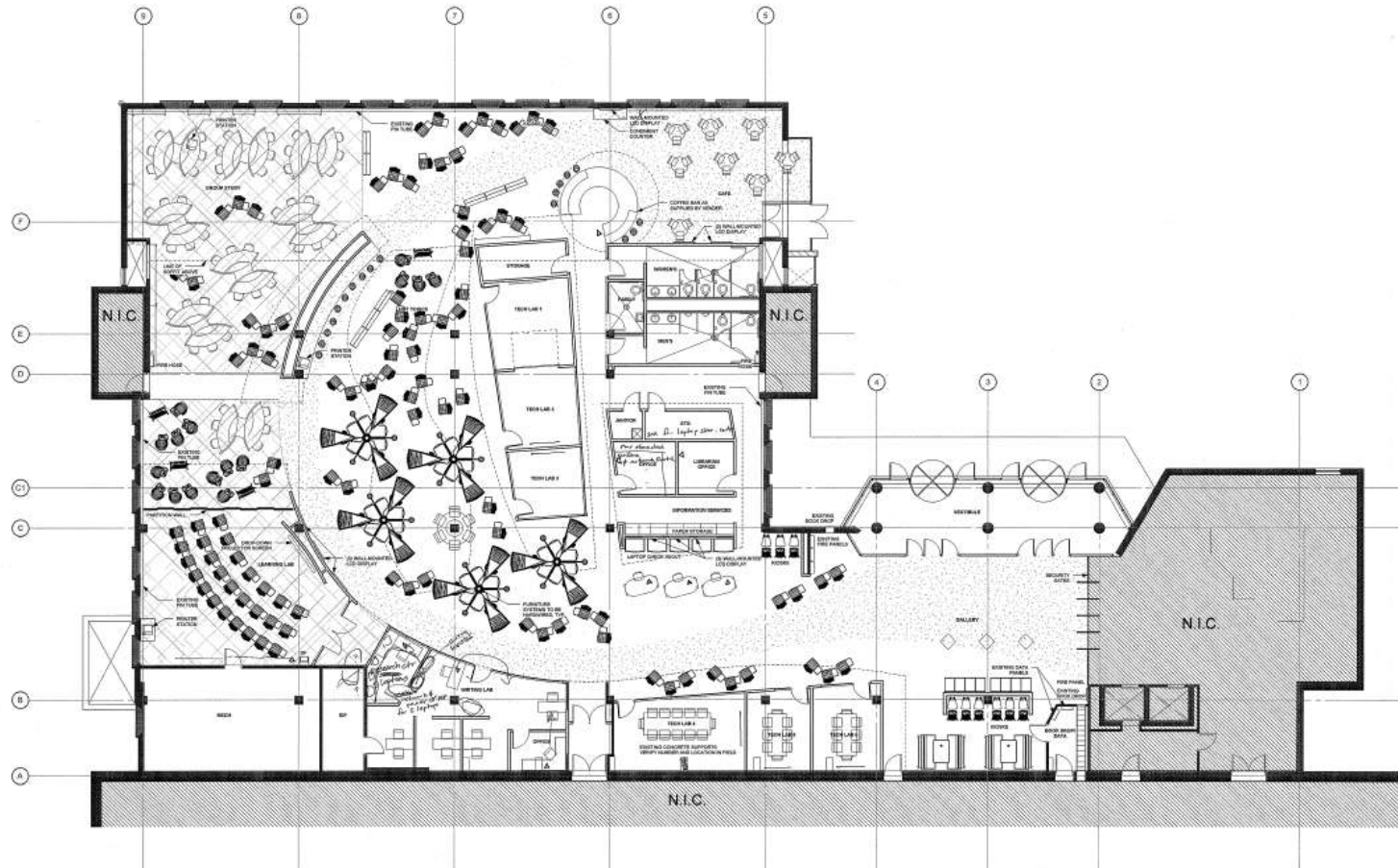
SO IT BEGINS . . .

What to expect and When to expect it

Designs

What goes where ? View the plans with images from other institutions with similar design.

First Floor Design



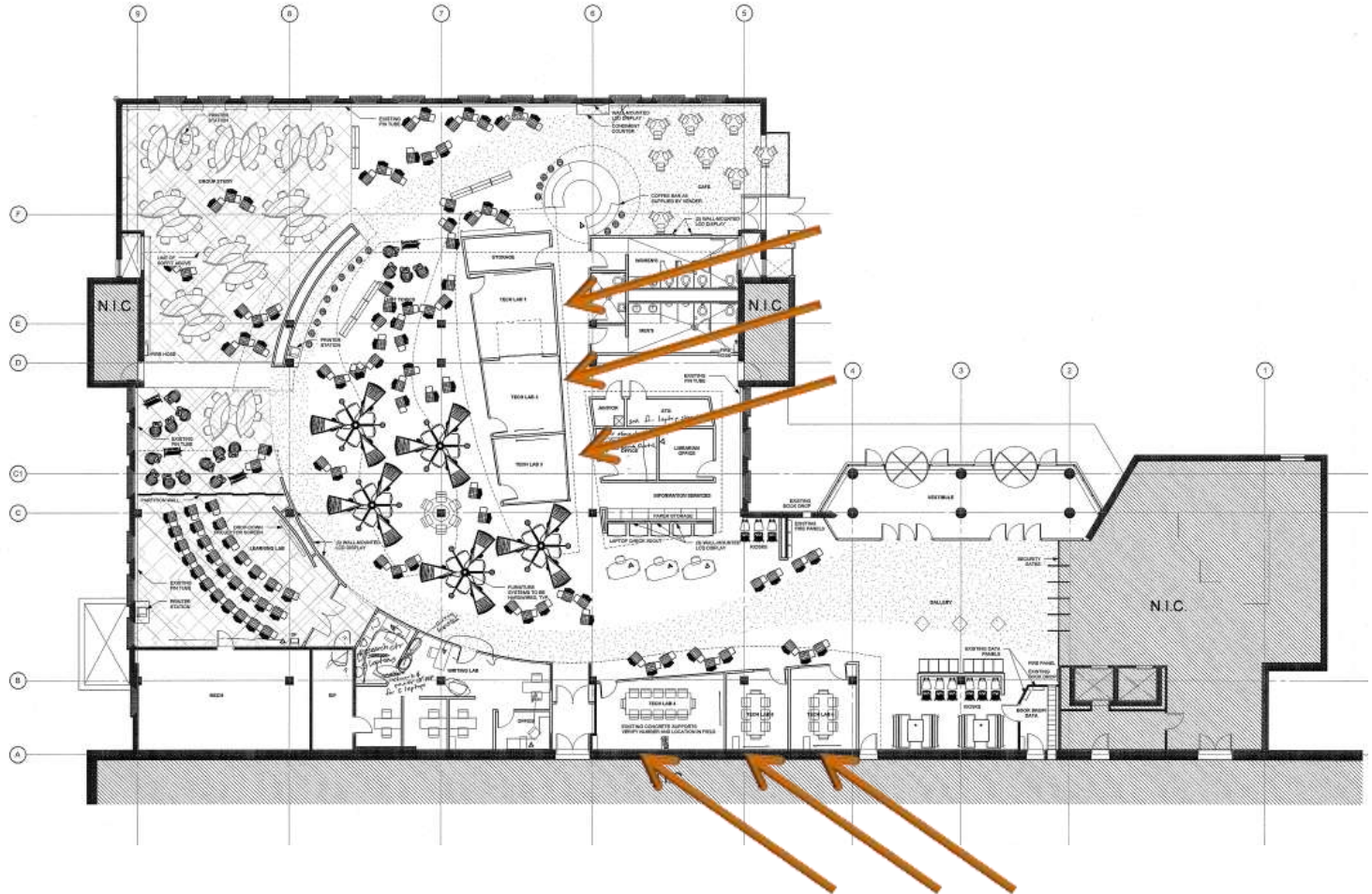
East Entrance Gallery

GALLERY

- LCD Displays
 - ▣ Library Services
 - ▣ Library Collections
 - ▣ Events
- Walk up stations

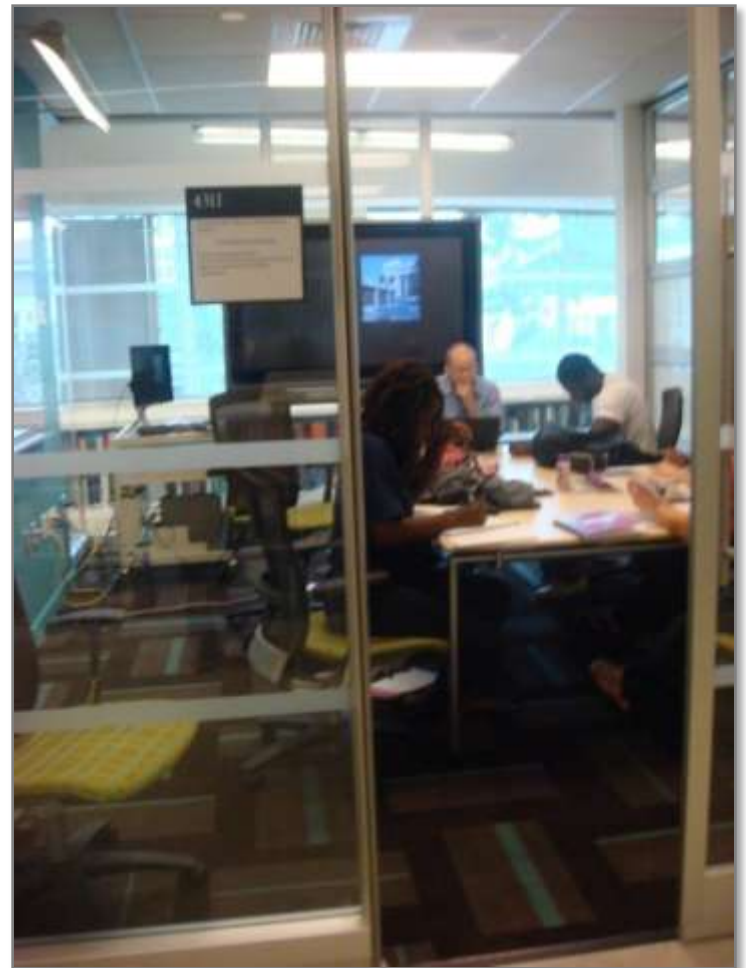


Team Technology Rooms



Team Technology Rooms

- ❑ Divisible space
- ❑ Group sharing software
- ❑ Flat panel display
- ❑ Audio capabilities
- ❑ Meetings and group collaboration
- ❑ Multimedia presentation
- ❑ Videoconferencing
- ❑ Projectors



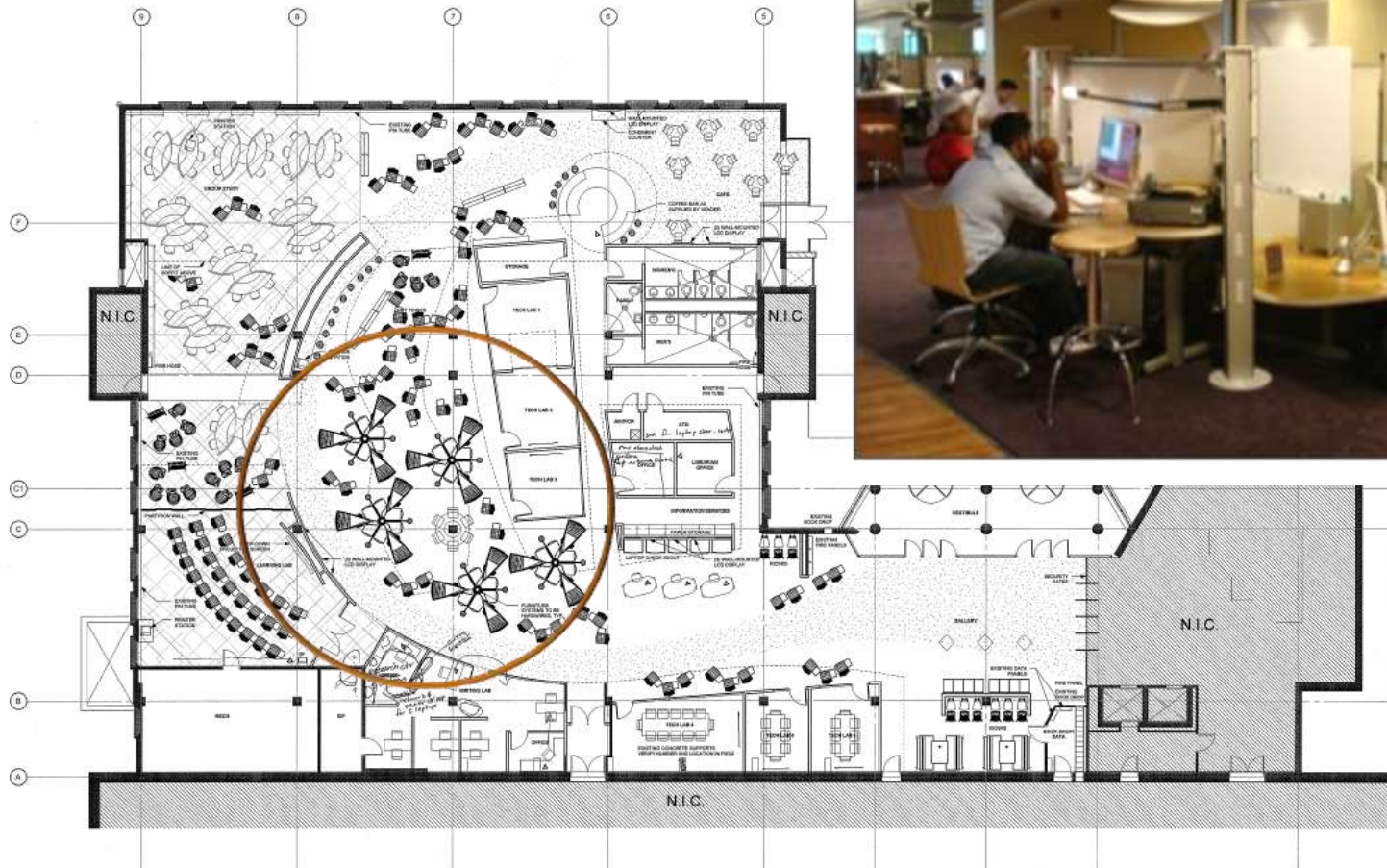
Classroom



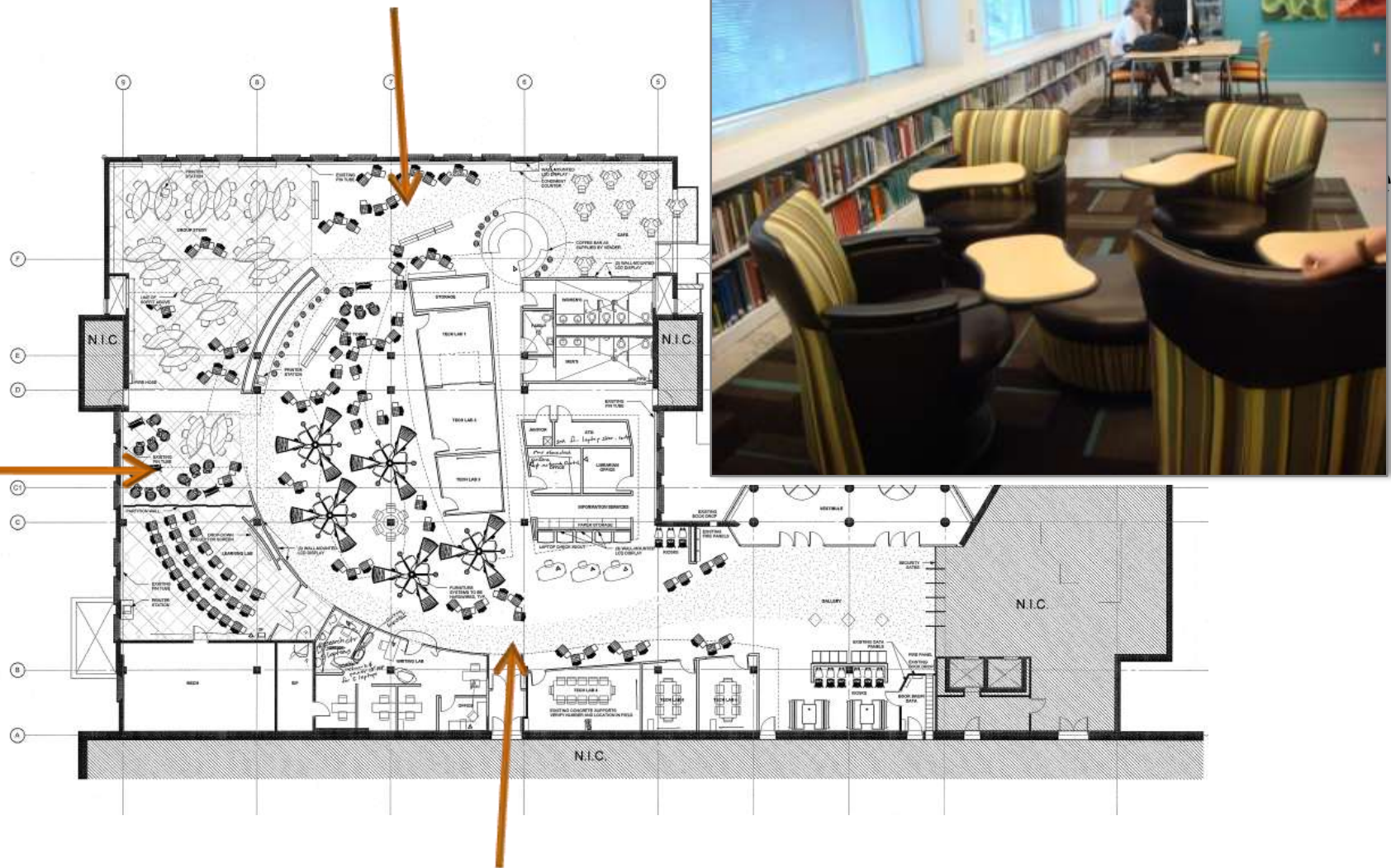
Collaborative Work Spaces



Individual Study Area

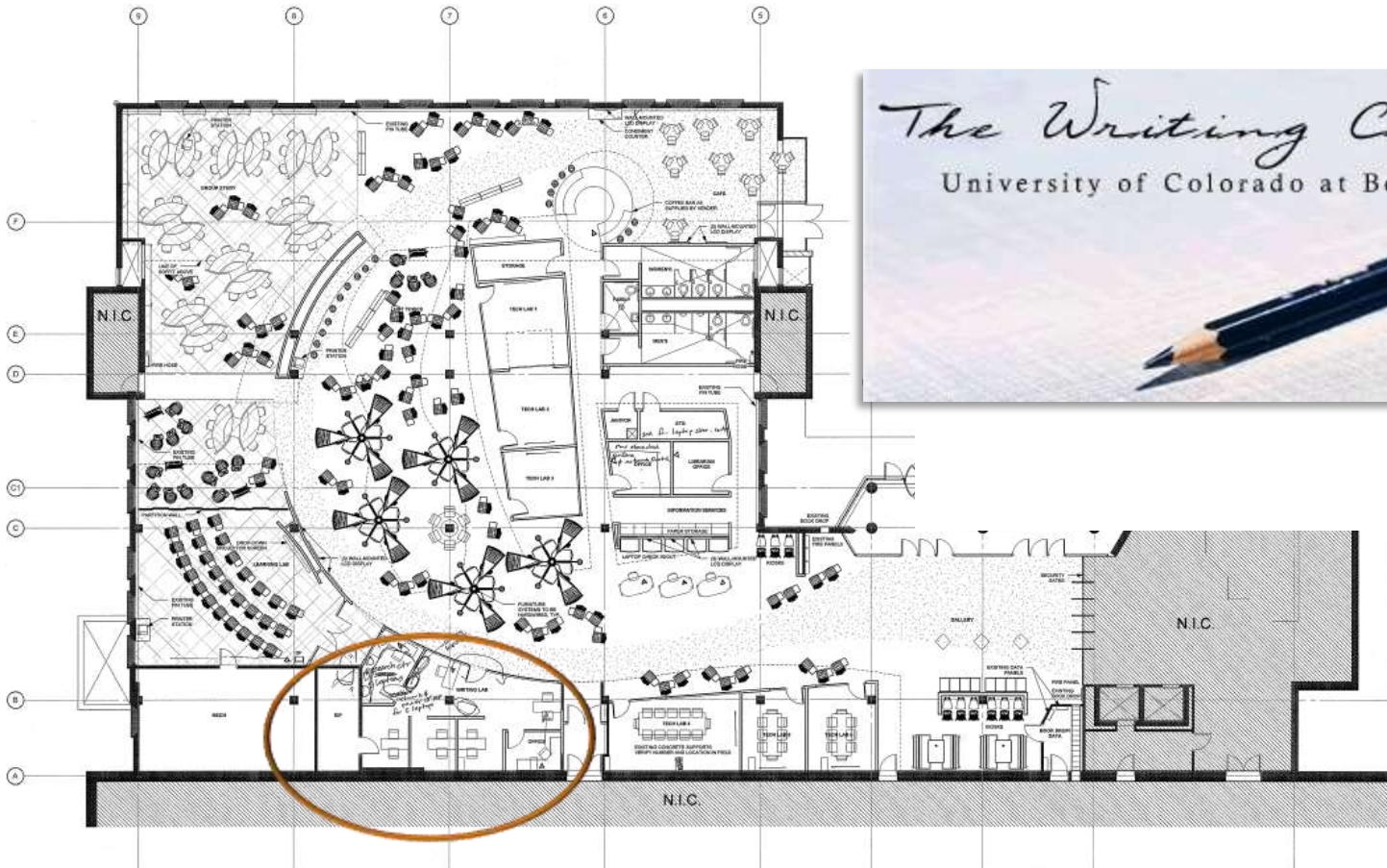


More Individual Work Spaces

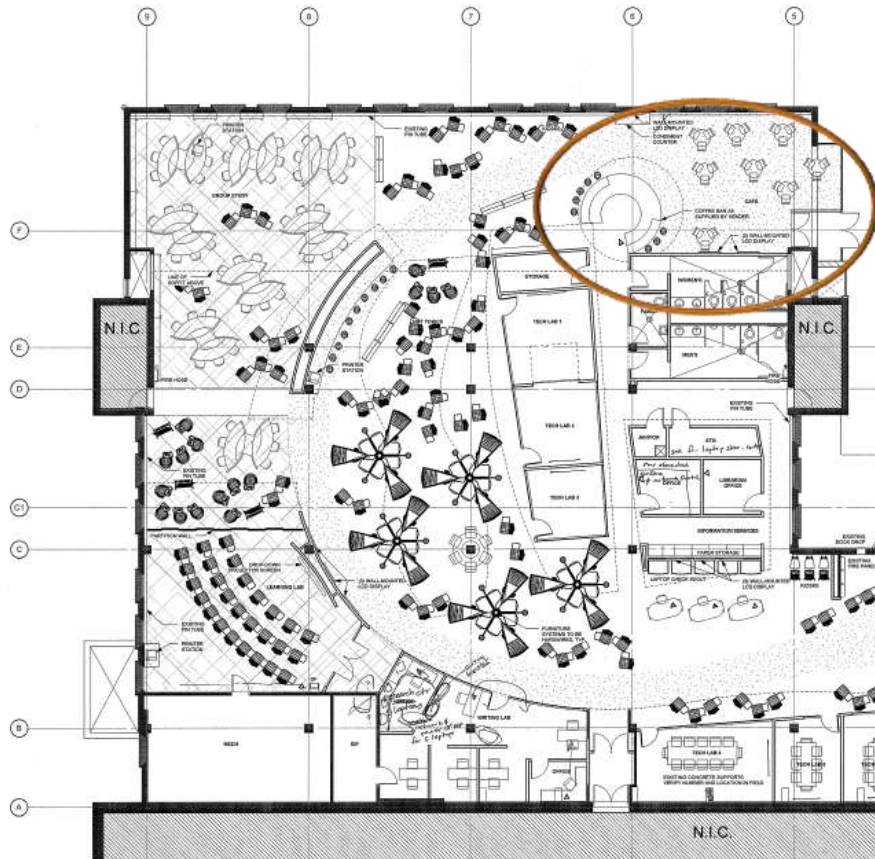


Writing and Research Center

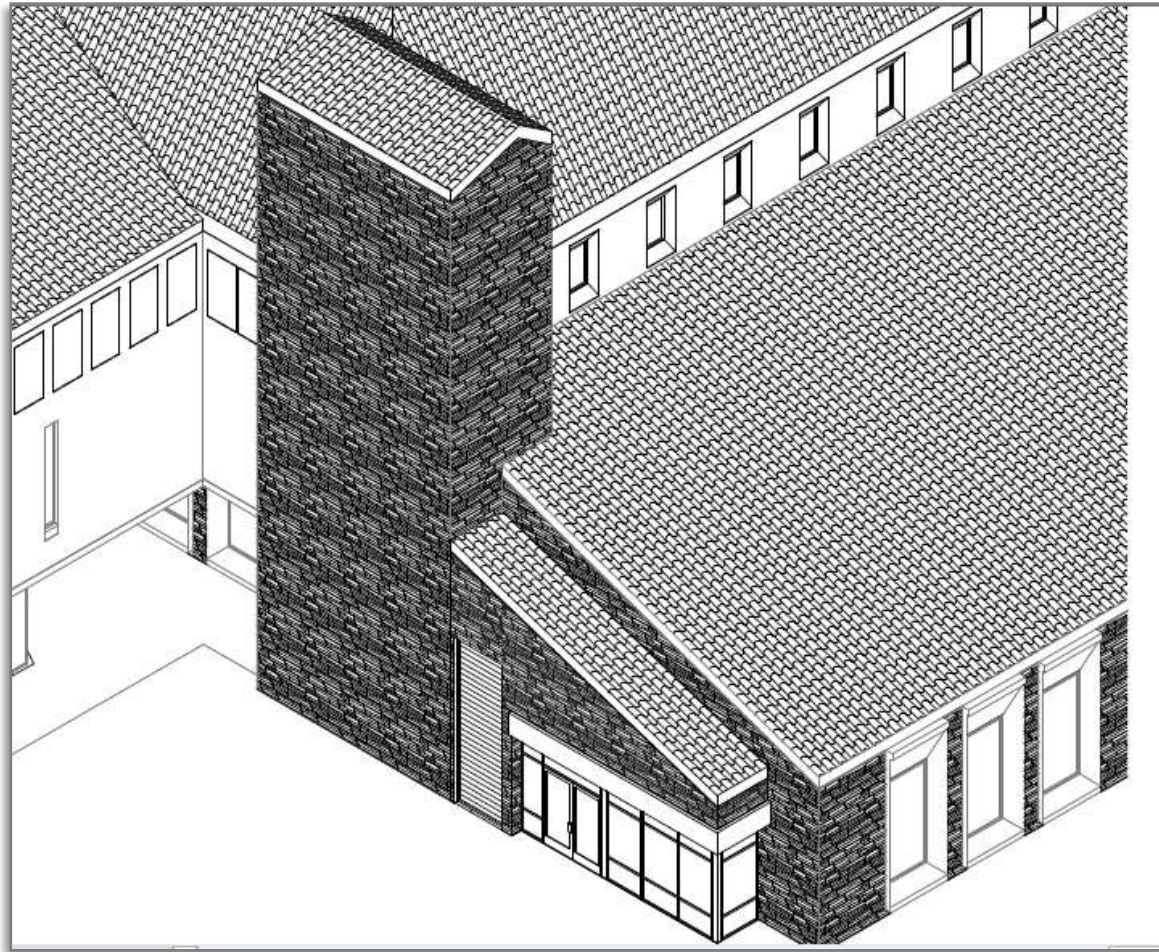
□ Central and Visible



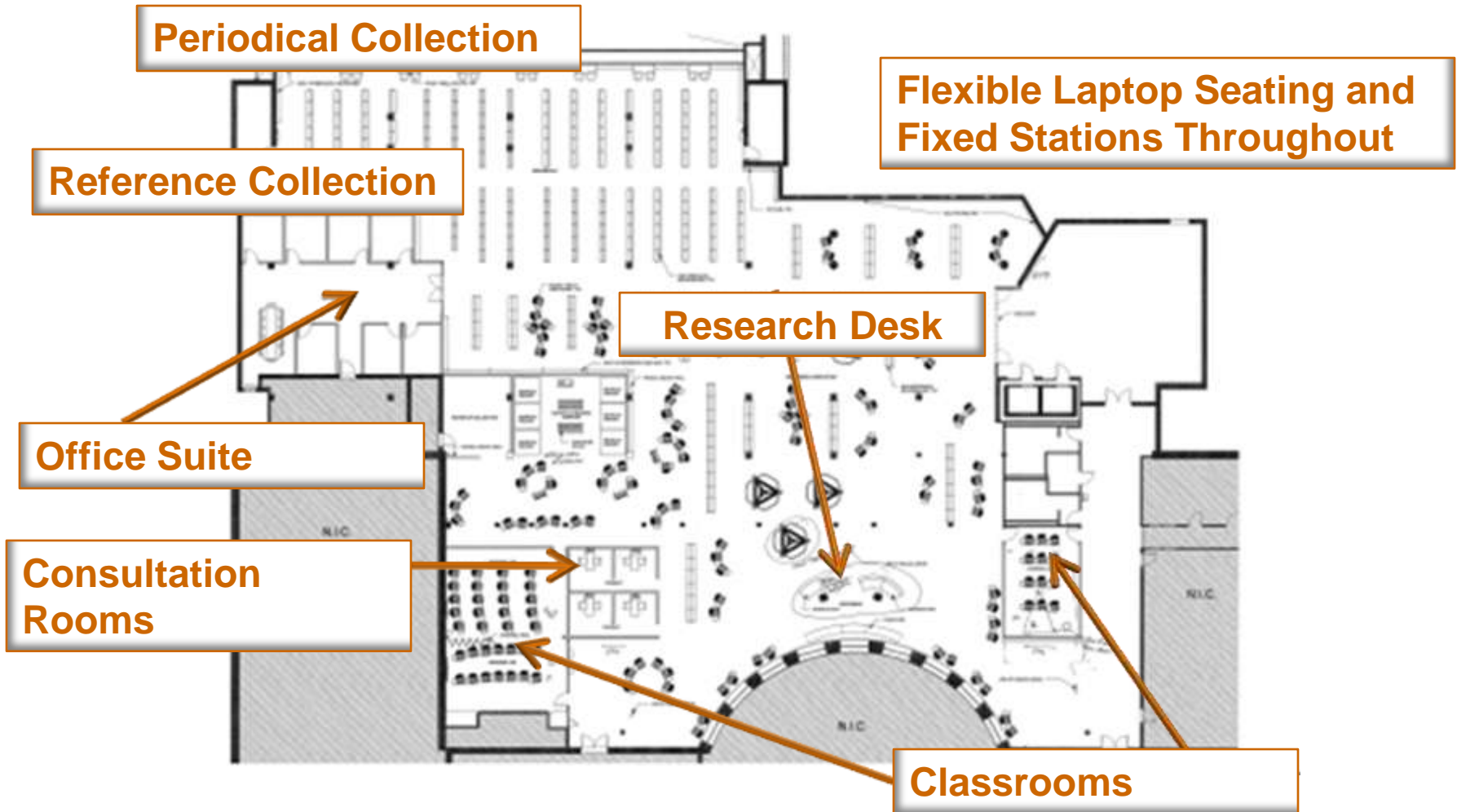
Café



Café Entrance

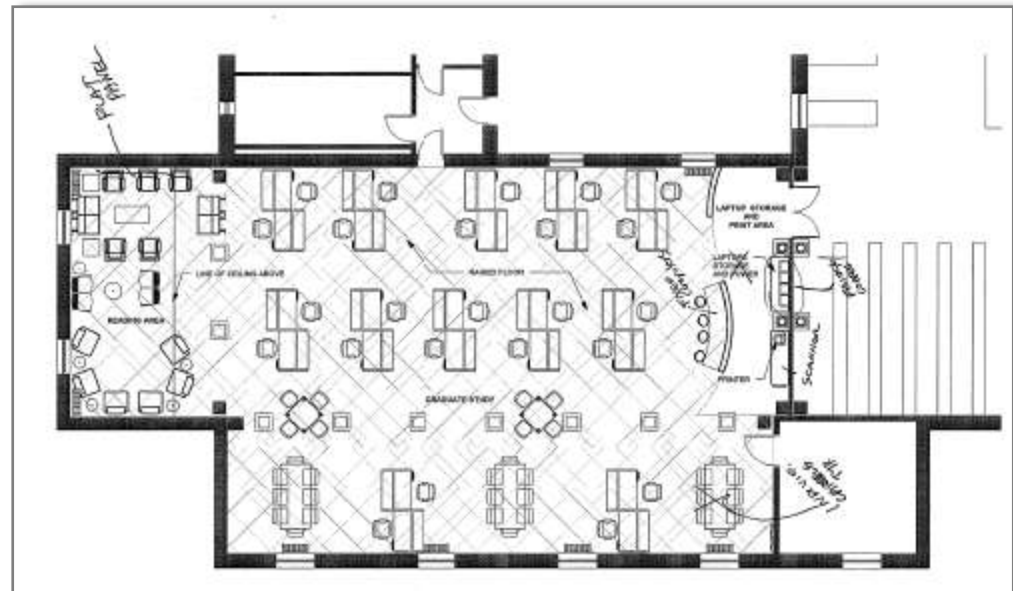


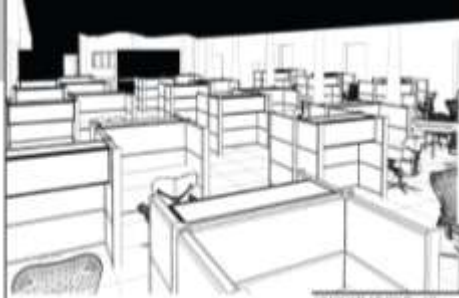
Second Floor Plan



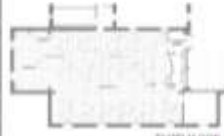
3rd Floor Graduate Study

- Study Carrels
- Lockable storage cabinets with power
- Comfy seating area
- Printer/ Scanner





GRADUATE STUDY Third Floor



THIRD FLOOR



SECOND FLOOR



REFERENCE PERIODICALS Second Floor



FIRST FLOOR

Questions / Comments?

Thank you!

STRUCTURAL ENGINEER
 Myrly/Worley Consulting Engineers
 13499 West Colfax Ave.
 P.O. Box 115580
 Lakewood, CO 80215
 303.431.6100

MECHANICAL ENGINEER
 The Beckwith Group
 1300 Blue Ave.
 Suite 400
 Pittsburgh, PA 15212
 412.324.0080

ELECTRICAL ENGINEER
 The Beckwith Group
 1300 Blue Ave.
 Suite 400
 Pittsburgh, PA 15212
 412.324.0080

1407 58th St.
 Suite 110
 Denver, CO 80231
 303.295.5750